

2. N. N. Chentsov, G. V. Dumkina, and N. S. Shoidina, "Calculation of direction coefficient for radiation in axisymmetric geometry," *Inzh.-Fiz. Zh.*, 34, No. 2, 306-312 (1978).
3. Yu. A. Zhuravlev et al., "Calculation of direction coefficients for radiation in multi-zonal axisymmetric systems by method of statistical tests," *Teplofiz. Vys. Temp.*, 17, No. 6, 1278-1285 (1979).
4. O. N. Favorskii and Ya. S. Kadaner, *Problems of Heat Transfer in Outer Space* [in Russian], Vysshaya Shkola, Moscow (1972).
5. L. J. Segerlind, *Applied Finite Element Analysis*, Wiley (1976).
6. A. I. Pekhovich and V. M. Zhidkikh, *Calculation of Thermal State of Solids* [in Russian], Energiya, Leningrad (1976).

MATHEMATICAL MODELING OF HEAT TRANSFER IN SCREENED FURNACES  
OF RADIAL-CYLINDRICAL AND BOX TYPE

V. M. Sedelkin and A. V. Paimov

UDC 936.3:621.181.7

A zonal model of the heat transfer in screened furnaces is proposed. Theoretical dependences for the distribution of the heat fluxes in the combustion chambers of industrial tube furnaces of two types are given.

Increasing the unit power of furnace equipment requires increase in their size and improvement in the sealing of the structure, which complicates experimental investigations. This has led to an increase in the role of mathematical modeling of the heat transfer in furnaces. Zonal methods are currently the most promising for theoretical calculations.

A distinguishing feature of screened furnaces is the complexity and diversity of their construction and also of the methods of organizing the furnace processes, which is extremely difficult to take into account in theoretical models. Simplified schemes are usually used here.

In the present work, an attempt is made to develop a sufficiently universal zonal method of calculation for screened furnaces. To this end, all chambers are divided into two classes. The first consists of chambers of radial-cylindrical type. These are characterized by the presence of cylindrical, conical, annular, and disk surfaces, bounding both the chamber itself and the isolated zones. The second class comprises furnaces of box type, whose volume is bounded by plane surfaces.

The physical parameters of the medium are assumed to be constant within the limits of each zone and to change discontinuously at the zone boundaries.

To universalize the method, the zones are classified in terms of geometric (Tables 1 and 2) and optical (Tables 3 and 4) features. The plus and minus signs in the tables denote the presence or absence of the corresponding initial parameters for zones of different geometric types.

The geometrical zonal model of a furnace may be considered in the form of a set of zones of various geometric forms included in the classification tables, which allows the constructional features of the particular furnaces to be taken into account.

The calculational system of equations used in the mathematical model to find the zonal mean temperatures and heat fluxes takes the form [1]

$$\sum_{i=1}^N P_{ij} T_i^4 + \sum_{\beta=1}^N \sum_{\gamma=1}^N (\delta_{\gamma}^i - \delta_{\beta}^i) \Omega_{\beta\gamma} T_{\beta} + C_j = 0, \quad j = 1, 2, \dots, N. \quad (1)$$

---

All-Union Scientific-Research and Design Institute for the Development of Gas-Industry Equipment, Saratov. Translated from *Inzhenerno-Fizicheskii Zhurnal*, Vol. 46, No. 2, pp. 288-294, February, 1984. Original article submitted October 12, 1982.

TABLE 1. Initial Parameters for the Calculation of the Generalized Angular Coefficients in Screened Furnaces of Box Type

Geometric type of zone	Zone characteristics	Parameters													
		$x_0$	$y_0$	$z_0$	$\Delta x$	$\Delta y$	$\Delta z$	$\eta_1$	$\eta_2$	$z_{\eta_1}$	$z_{\eta_2}$	$\eta_E$	$z_{\eta_E}$	$y_E$	$z_E$
1	Volume, $\eta_1 \neq \eta_2 \neq 0$	+	-	+	+	-	+	+	+	+	+	-	-	-	-
2	Volume, $\eta_1 = \eta_2 \neq 0$	+	-	+	+	-	+	+	+	+	+	+	+	-	-
3	Volume, $\eta_1 = 0, \eta_2 \neq 0$	+	+	+	+	-	+	+	+	-	+	-	-	-	-
4	Volume, $\eta_1 \neq 0, \eta_2 = 0$	+	+	+	+	-	+	+	+	-	-	-	-	-	-
5	Volume, $\eta_1 = \eta_2 = 0$	+	+	+	+	+	+	-	-	-	-	-	-	+	+
Side wall:															
6	right-hand	+	+	+	+	+	+	-	-	-	-	-	-	-	-
7	left-hand	+	+	+	+	+	+	-	-	-	-	-	-	-	-
Frontal wall:															
8	front	+	+	+	+	+	+	-	-	-	-	-	-	-	-
9	back	+	+	+	+	+	+	-	-	-	-	-	-	-	-
Surface:															
10	hearth	+	+	+	+	+	+	-	-	-	-	-	-	-	-
11	arched	+	+	+	+	+	+	-	-	-	-	-	-	-	-
Slope:															
12	upper	+	-	+	+	-	+	+	+	+	+	-	-	-	-
13	lower	+	-	+	+	-	+	+	+	+	+	-	-	-	-
Screen:															
14	side	+	+	+	+	+	+	-	-	-	-	-	-	-	-
15	horizontal	+	+	+	+	+	+	-	-	-	-	-	-	-	-
16	tapered	+	-	+	+	-	+	+	+	+	+	-	-	-	-

TABLE 2. Initial Parameters for the Calculation of Generalized Angular Coefficients in Screened Furnaces of Radial-Cylindrical Type

Geometric type of zone	Zone characteristics	Parameters										
		$z_0$	$\rho_0$	$\varphi_0$	$\Delta z$	$\Delta \rho$	$\Delta \varphi$	$\rho_E$	$\eta_1$	$\eta_2$	$z_{\eta_1}$	$z_{\eta_2}$
1	Volume, $\eta_1 \neq \eta_2 \neq 0$	+	-	+	+	-	+	-	+	+	+	+
2	Volume, $\eta_1 = \eta_2 \neq 0$	+	-	+	+	-	+	-	+	+	+	+
3	Volume, $\eta_1 = 0, \eta_2 \neq 0$	+	+	+	+	-	+	-	+	+	-	+
4	Volume, $\eta_1 \neq 0, \eta_2 = 0$	+	+	+	+	-	+	-	+	+	+	-
5	Volume, $\eta_1 = \eta_2 = 0$	+	+	+	+	+	+	-	-	-	-	-
Cylinder surface:												
6	internal	+	+	+	+	+	+	-	-	-	-	-
7	external	+	+	+	+	+	+	-	-	-	-	-
Surface:												
8	arched	+	+	+	+	+	+	-	-	-	-	-
9	hearth	+	+	+	+	+	+	-	-	-	-	-
10	cylindrical screened	+	+	+	+	+	+	-	-	-	-	-
Azimuthal plane:												
11	$\varphi = \varphi_{\min} \geq 0$	+	+	+	+	+	+	-	-	-	-	-
Azimuthal plane:												
12	$\varphi = \varphi_{\max} < 2\pi$	+	+	+	+	+	+	-	-	-	-	-
13	Volume, containing a screen	+	-	+	+	-	+	-	+	+	+	+
14	Conical surface	+	+	+	+	+	+	+	-	-	-	-

TABLE 3. Zone Classification with Respect to Optical Features for Screened Furnaces of Box Type

Optical type of zone	1	2	3	4	5	6	7
Zone characteristics	Volume zones, no screen	Absorbing boundary surface	Screen zones	Mirror surface zones	Volume zones with vertical screen	Volume zones with horizontal screen	Volume zones with inclined screen
Numbers of the geometric types of zones appearing in the given optical type	1-5	6-13	6, 7, 14-16	6-9	5	5	2

TABLE 4. Zone Classification with Respect to Optical Features for Screened Furnaces of Cylindrical Type

Optical type of zone	1	2	3	4	5	6	7
Zone characteristics	Volume zones	Cylindrical screen zones	Azimuthal screen zones, $\varphi = \varphi_{\min} \geq 0$	Azimuthal screen zones, $\varphi = \varphi_{\max} < 2\pi$	Azimuthal mirror surface, $\varphi = \varphi_{\min} \geq 0$	Azimuthal mirror surface, $\varphi = \varphi_{\max} < 2\pi$	Absorbing boundary surface
Numbers of the geometric zone types included in the given optical type	1-5, 14	10	11	12	11	12	6-9, 13

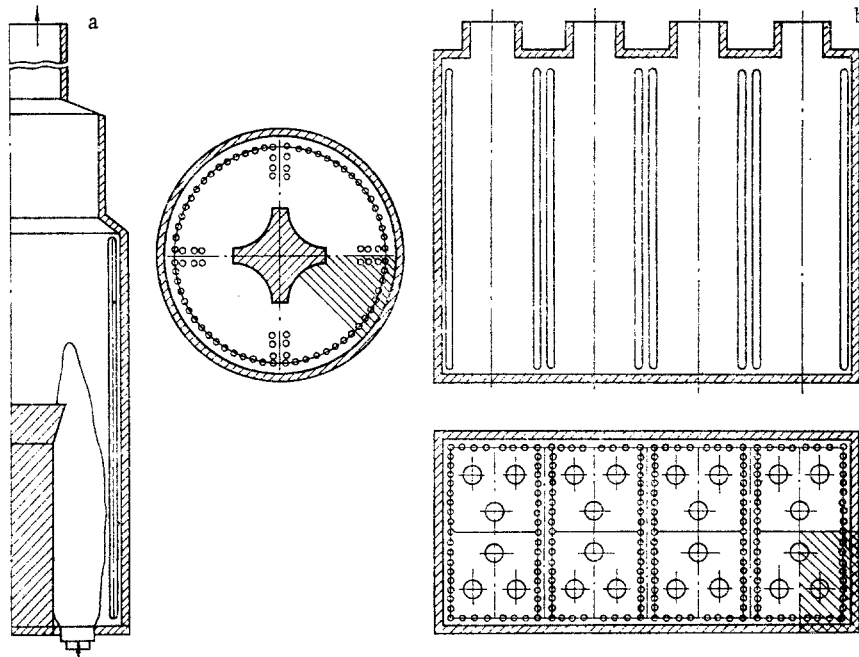


Fig. 1 TsD4 630/15 (a) and VS4 1400/13 (b) tube furnaces.



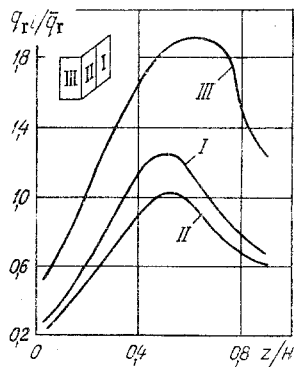


Fig. 4. Distribution of the dimensionless radiational specific heat fluxes over the sections of the heating surface of the VS4 1400/13 tube furnace;  $H$  is the tube length ( $H = 13$  m);  $\bar{q}_p = 25.85$  kW/m<sup>2</sup>.

Using the given method, mathematical modeling of the heat transfer in TsD 630/16 VS 1400/13 commercial tube furnaces is undertaken. Diagrams of these furnaces are shown in Fig. 1.

The TsD4 630/15 furnace is of a radial-cylindrical type. A scatterer-distributor runs along the axis of the radiation chamber, in the form of a pyramid with concave faces. The faces form supporting walls for the flames of burners in the bottom of the furnace. The scatterer-distributor divides the radiation chamber into four independent heat-transfer zones with autonomous regulation of the radiant-coil heat stress.

The VS4 1400/13 furnace is of box type. The radiant chamber of the furnace is divided into four independent sections by means of producing tubes; in each section, six burners are installed in the hearth.

To simplify the calculations, and also reduce the machine time and the extent of detailing of the model, the investigation of the heat transfer is limited to the regions of the screened furnaces shaded in Fig. 1. The remainder of the furnace volume may be regarded as the sum of the calculated sections, in view of the symmetry. Radiation from the remaining volume is taken into account by introducing mirror zones into the model, positioning them in the symmetry planes of the sections.

The working space of TsD-type furnaces (Fig. 2a) is divided into 103 zones, of which 32 are volume zones, 17 are stacking zones, six are mirror zones, 45 are surface-heating zones, and three are hypothetical adiabatic, absolutely black, surface zones closing the holes for the introduction of fuel, the exhaust of flue gases, and the upper part of the scatterer-distributor. Inclined conical surfaces separate the flow parts of the oily (zones 1-6) and gas (zones 11-16) flames. The boundary layer of gases (zones 24-32) at the supporting wall is also distinguished in the model. Zones 17-23 represent inverse flue-gas current.

The working space of the VS-type furnace (Fig. 2b) is divided into 65 zones, of which 28 are volume zones, nine are surface stacking zones, 24 are surface heating zone, two are hypothetical, absolutely black, surface zones closing the holes of the introduction of fuel and the exhaust of flue gases, and two are mirror zones.

The fuel oil burns in the first six zones. Regions of inverse flue-gas current (zones 9-12) and gas boundary layer (zones 13-28) are also distinguished in the model.

The heat load of the sections considered was 4225 kW for the TsD-type furnace and 6381 kW for the VS-type furnace.

The distribution of the incident and resulting heat fluxes with respect to the heating surfaces is shown in Figs. 3 and 4. In both furnaces, significant nonuniformity is observed in their distribution. Thus, for the furnace of TsD type the nonuniformity coefficient (the ratio of the maximum specific heat flux to the mean) is 2.07, while for the VS-type furnace it is 1.82. The central tubes of the supporting wall are the most stressed in the TsD-type furnace (Fig. 3b), which is explained by the maximum angle of visibility of the high-temperature regions of the flame, the combustion products, and the scatterer-distributor for these tubes.

Comparison of the results of experiment and calculation (Fig. 3a) shows that the incident radiational heat fluxes are in satisfactory agreement. The maximum discrepancy in these fluxes corresponds to the lower section of the tubes and is of the order of 20%.

On the whole, the results of the investigation show that the proposed mathematical model of heat transfer is of sufficient accuracy for engineering calculations, and may be used to determine the temperature fields and resulting heat fluxes in commercial furnaces.

#### NOTATION

$x_0, y_0, z_0, \rho_0, \varphi_0$ , minimal abscissa, ordinate,  $z$  coordinate, radius vector, and polar angle of zone,  $m$ , rad;  $\Delta x, \Delta y, \Delta z, \Delta \rho, \Delta \varphi$ , dimensions of the zones along the coordinates,  $m$ , rad;  $y_E, z_E, \rho_E$ , corresponding coordinates of the surface passing through the tube axes,  $m$ ;  $\eta_1, \eta_2$ , angles between the  $z$  axis and the surfaces lying close to and far from the  $z$  axis, rad;  $\eta_E$ , angle between the  $z$  axis and the surface passing through the tube axes, rad;  $z_{\eta_1}, z_{\eta_2}, z_{\eta_E}$ ,  $z$  coordinates of the points of intersection of the corresponding surfaces with the  $z$  axis,  $m$ ;  $P_{ij}$ , radiation-transfer coefficients,  $W/K^4$ ;  $\Omega_{ij}$ , coefficients of convective-turbulent transfer,  $W/K$ ;  $T_i, T_\beta$ , temperatures of zones  $i$  and  $\beta$ ;  $K; \delta_{ij}^\gamma, \delta_{ij}^\beta$ , Kronecker deltas;  $c_j$ , free term of the  $j$ -th equation;  $N$ , total number of volume and surface zones.

#### LITERATURE CITED

1. V. G. Kashirskii, V. M. Sedelkin, and A. V. Paimov, "Zonal mathematical model of external heat transfer in tube furnaces," *Izv. Vyssh. Uchebn. Zaved., Energ.*, No. 4, 91-96 (1977).
2. G. I. Marchuk (ed.), *Monte Carlo Method in the Radiation-Transfer Problem* [in Russian], Atomizdat, Moscow (1967).
3. H. C. Hottel and A. F. Sarofim, *Radiative Transfer*, McGraw-Hill, New York (1967).
4. V. M. Sedelkin, A. V. Paimov, V. A. Kamenskaya, and M. S. Ugol'nikov, "Method of computer calculation of the opticogeometric characteristics of reciprocal radiative transfer in screened furnaces taking account of nongray radiation of the volume and surface zones," in: *Processes of Directed Heat Transfer* [in Russian], Naukova Dumka, Kiev (1979), pp. 113-119.

#### NUMERICAL CALCULATION OF THE GENERALIZED ANGULAR EMISSION COEFFICIENTS IN TWO-DIMENSIONAL SYSTEMS

V. G. Lisienko and Yu. K. Malikov

UDC 536.3

We describe a method of calculating the generalized angular emission coefficients by expressing them in the form of finite series.

The calculation of the generalized angular emission coefficients is the most important step in applying zonal methods to the calculation of heat exchange in various radiating systems. The calculation of the generalized angular emission coefficients by direct integration is possible only in special cases [1]. The resulting formulas are complex and not very convenient in engineering applications. This deficiency is also present in the approximate method developed in [2, 3]. An exception is the approximate method of [4, 5], in which relatively simple analytical expressions can be obtained with the help of theorems on the mean. In this method, the generalized angular emission coefficient is written as a product of a geometrical angular coefficient and a certain average transmissivity of the medium. The latter is considered as a purely geometrical characteristic of a radiating layer, and this leads to significant errors.

In the present paper, the generalized angular emission coefficients are obtained for a two-dimensional system as finite series, where each term is a product of a geometrical angular coefficient and the transmissivity of the medium. The resulting algorithm for the numerical computation of the generalized angular emission coefficients can be used to determine the coefficients for two-dimensional systems of complicated geometry. In this approach, the amount of calculation is about 100-1000 times less than in the Monte Carlo method [5] which is usually used in these problems.

---

S. M. Kirov Urals Polytechnical Institute, Sverdlovsk. Translated from *Inzhenero-Fizicheskii Zhurnal*, Vol. 46, No. 2, pp. 294-298, February, 1984. Original article submitted September 14, 1982.